

TP (Tube & Pipe) Series Lineup

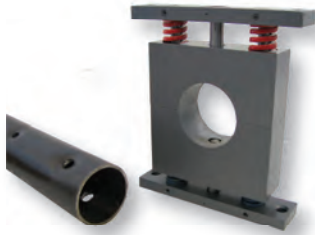
TP-1 1/4, TP-2-3/8, TP-2, TP-2M, TP-AE and TP-CN

- Punch round and shaped tubing
- Punch both sides of tube, or just one side
- Punch “dimpled” holes or deformation-free holes
- Cope or notch the end of tube or pipe



TP-1 1/4 Tube & Pipe Punching Unit (Page 74)

The TP-1 1/4 unit provides two sided punching in round or shaped tubes. The unit is designed for punching tube diameters from 9/16" O.D. to 1 1/4" O.D. Each assembly top and bottom contains a punch to pierce one hole in-line on each side of the tube. The tubing is supported on all sides during punching. If only one hole is desired, simply remove one of the punches. Depending on your material thickness, standard punch diameters are available from .0937" to .500". Non-standard tooling for larger hole sizes and/or shaped hole punching is also available.



TP-2 3/8 Tube & Pipe Punching Unit (Page 75)

The TP-2 3/8 unit provides two sided punching in round or shaped tubes. The unit is designed for punching tube diameters from 1 5/16" O.D. to 2 3/8" O.D. Each assembly top and bottom contains a punch to pierce one hole in-line on each side of the tube. The tubing is supported on all sides during punching. If only one hole is desired, simply remove one of the punches. Depending on your material thickness, standard punch diameters are available from .0937" to .500" (12.7mm). Non-standard tooling for larger hole sizes and/or shaped hole punching is also available.



TP-2 Tube & Pipe Punching Unit (Page 76)

The TP-2 unit provides straight through holes with one punch in round or shaped tubing. The unit is designed for punching tube diameters from 9/16" O.D. to 1" O.D. The tubing is supported on all sides during punching. The top hole is dimpled; the bottom hole is punched into a die, providing a dimple free hole. (UniPunch offers custom mandrel style punching units for dimple free holes. See TP-2M.) Depending on your material thickness, punch diameters are available from .0937" to .4375". Non-standard tooling for shaped hole punching is also available.



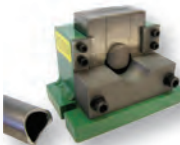
TP-2M Unit Mandrel Tube Punching (Page 77 & 78)

The TP-2M mandrel style unit provides dimple-free holes in round, square or rectangular tube or pipe. The unit is designed for punching tube sizes up to 1", and each unit is designed for the particular hole size and tubing application. Depending on your material thickness, standard punch diameters are available up to .4375". Non-standard tooling for shaped hole punching is also available.



TP-AE Unit Mandrel Tube Punching (Page 77 & 79)

The TP-AE mandrel unit provides dimple-free holes near the end of round or shaped tube or pipe. Maximum hole size or shape depends on tube size and material wall thickness. The unit can also be used for notching or slitting the end of the tube.



TP-CN Units Tube & Pipe Coping & Notching (Page 80)

The TP-CN units provide tooling for tube and pipe coping and notching applications. Each unit is designed for the particular application. In addition, units are also available for tube and pipe slotting, vee notching, shearing, staking and trimming.

Note: For custom tube & pipe fabricating applications, contact the UniPunch Sales Department.